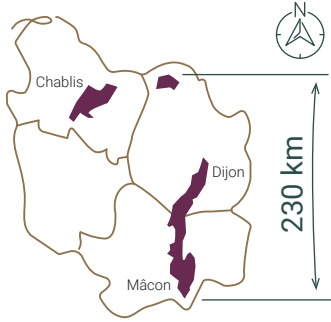
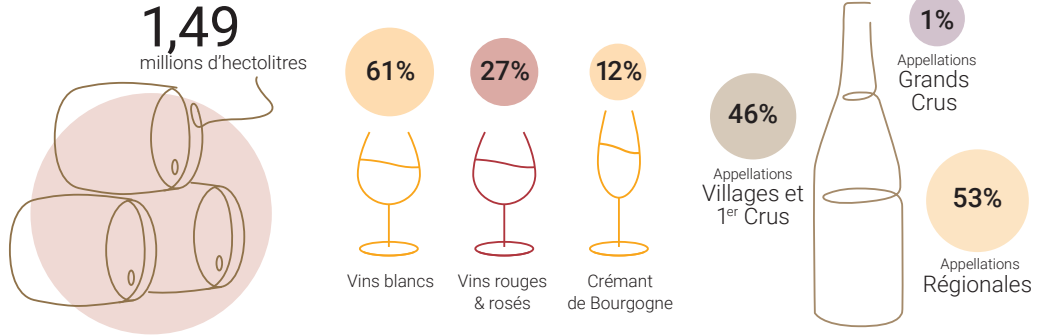


LES CHIFFRES CLÉS DE LA BOURGOGNE VITICOLE

Le Territoire

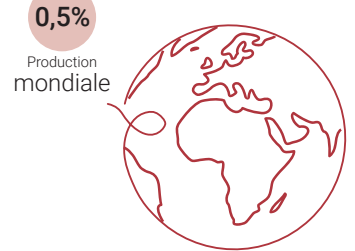
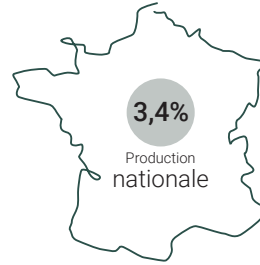
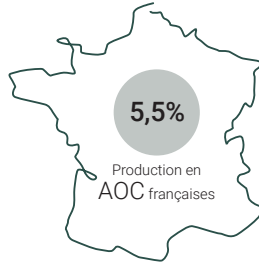
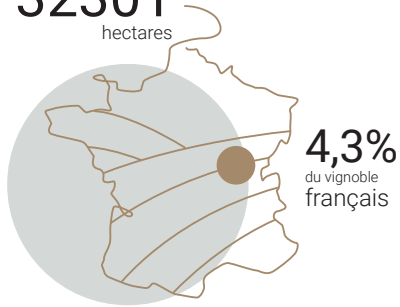


La Production moyenne*

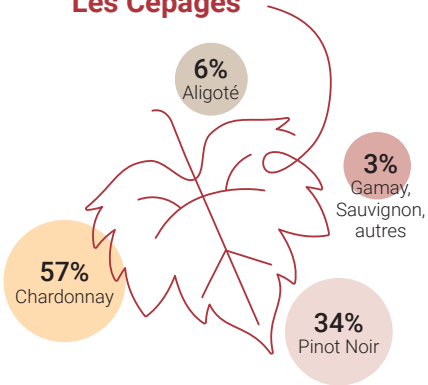


32301

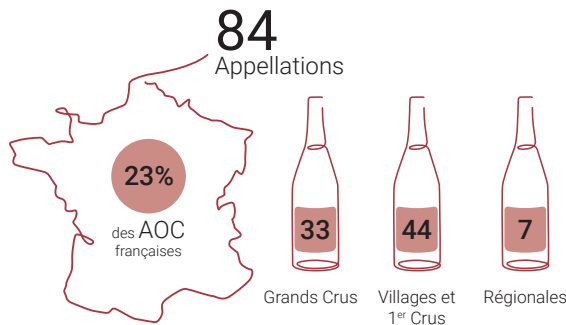
hectares



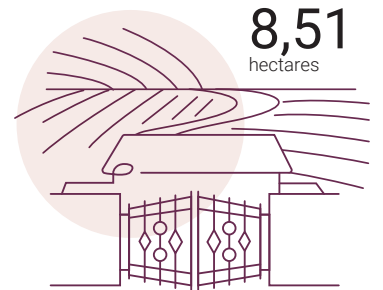
Les Cépages



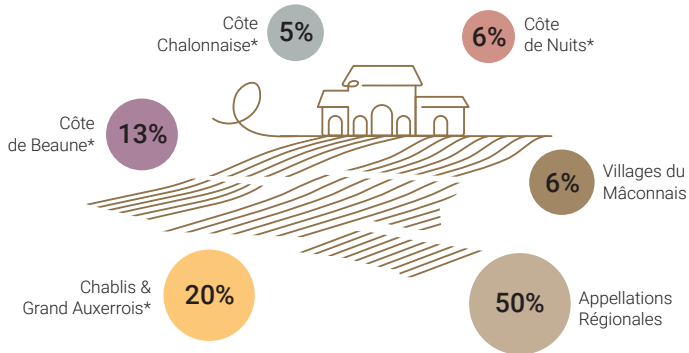
Les Appellations



Taille moyenne d'un domaine

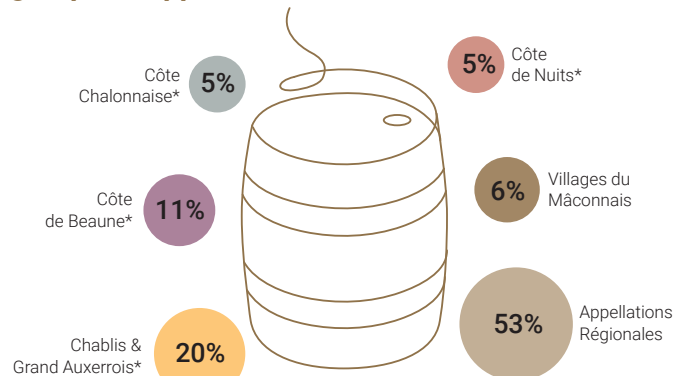


Surface en production par groupes d'appellations*



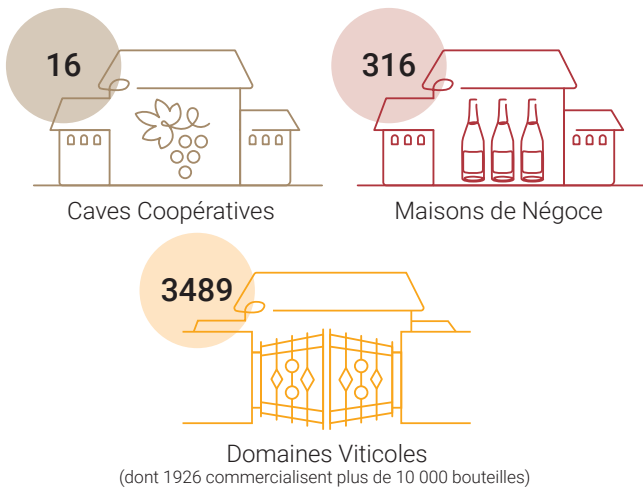
*(Villages, Villages 1^{ers} crus, et Grands Crus)

Production par groupes d'appellations*

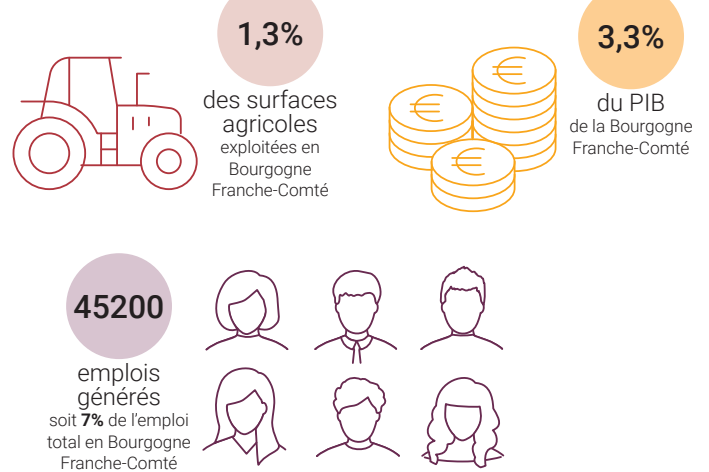


LES CHIFFRES CLÉS DE LA BOURGOGNE VITICOLE

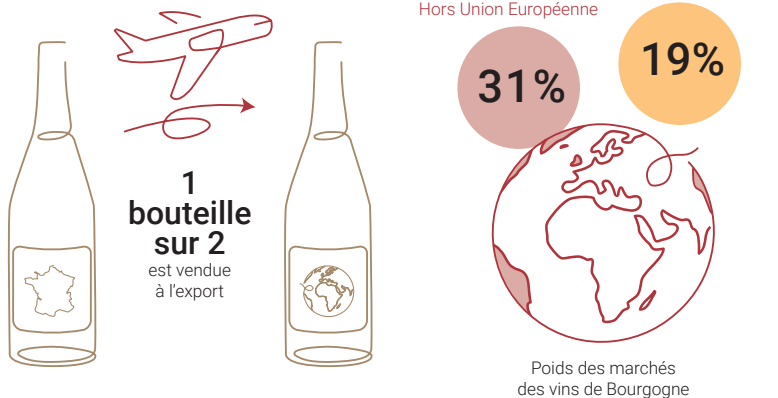
Les Entreprises



Le Poids régional



Parts de l'export* (en volume)

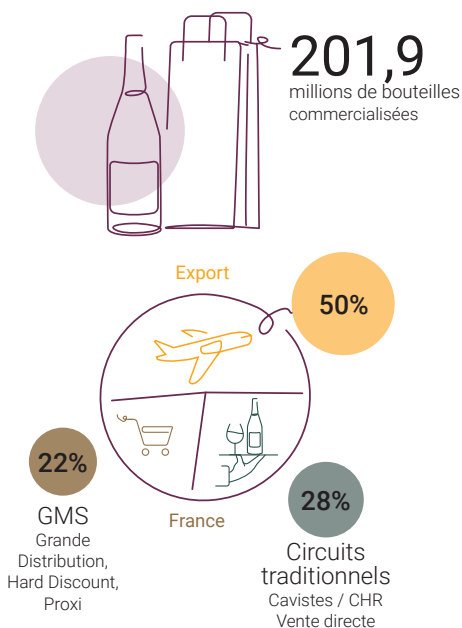


Premiers marchés à l'export* (en volume)

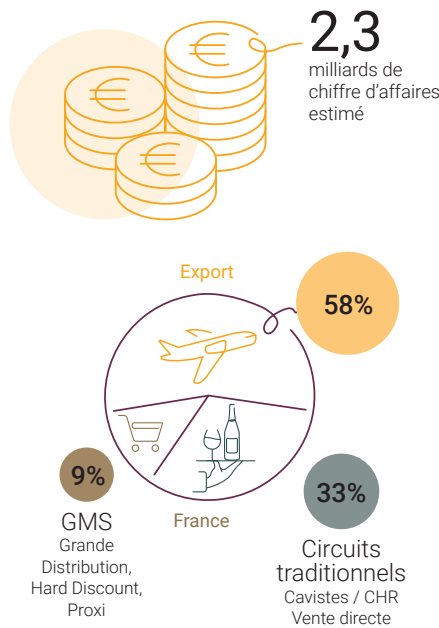


Le Marché*

Millions de bouteilles et répartition des ventes



Chiffre d'affaires et répartition du chiffre d'affaires



Chiffre d'affaires à l'export et échanges mondiaux

