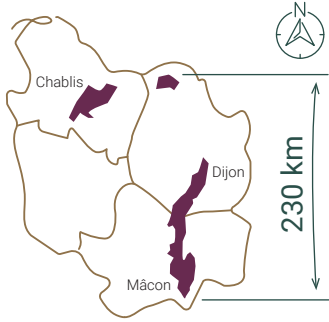
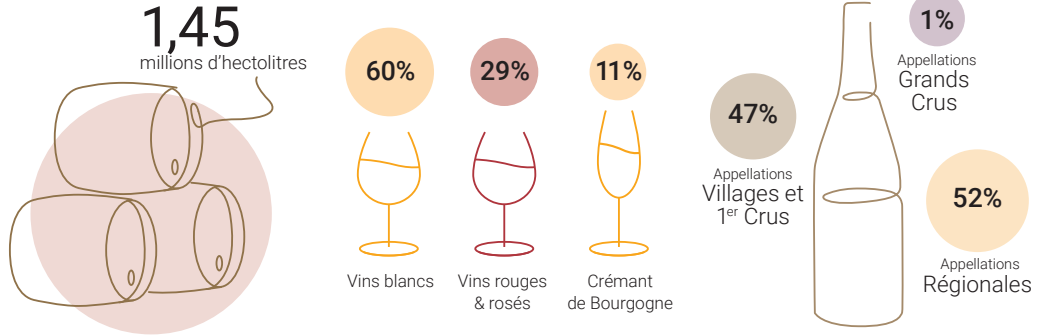


LES CHIFFRES CLÉS DE LA BOURGOGNE VITICOLE

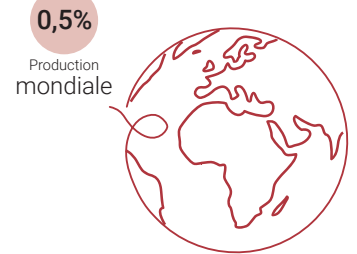
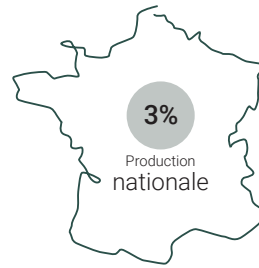
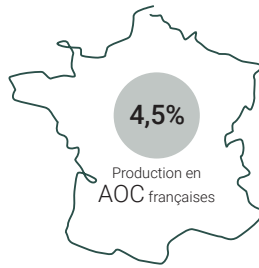
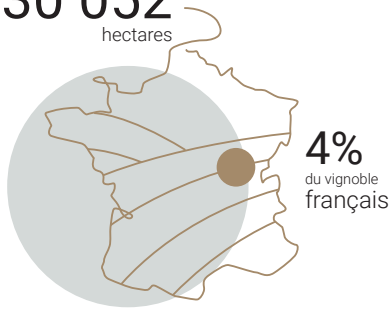
Le Territoire



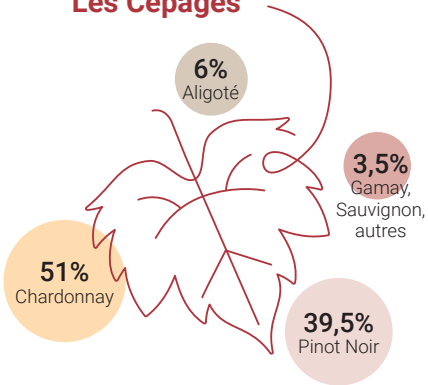
La Production moyenne*



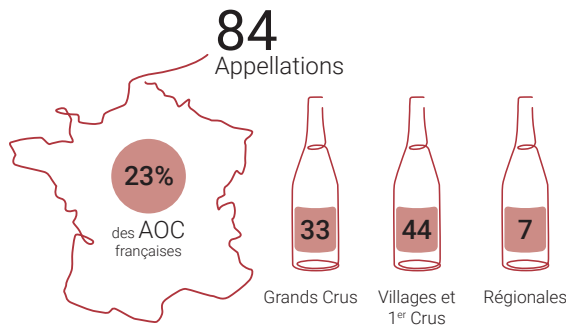
30 052 hectares



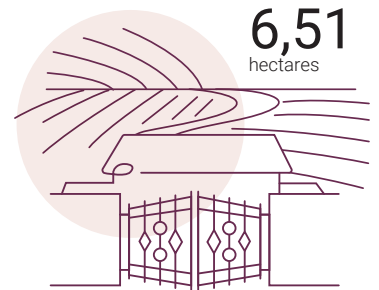
Les Cépages



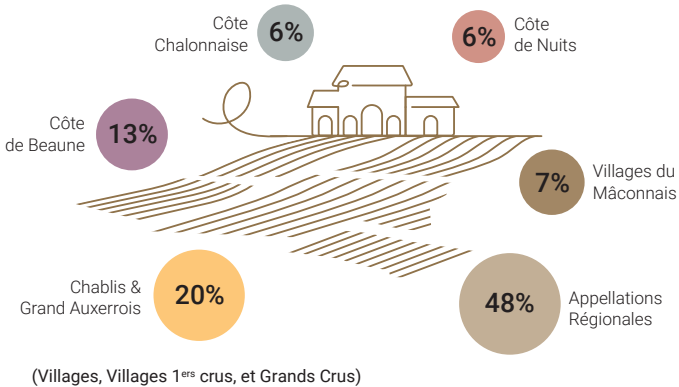
Les Appellations



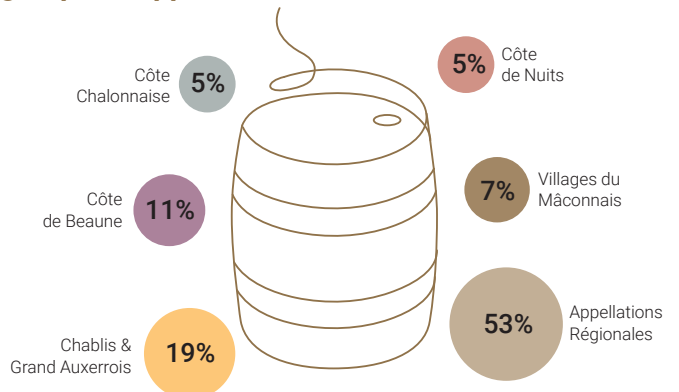
Taille moyenne d'un domaine



Surface en production par groupes d'appellations

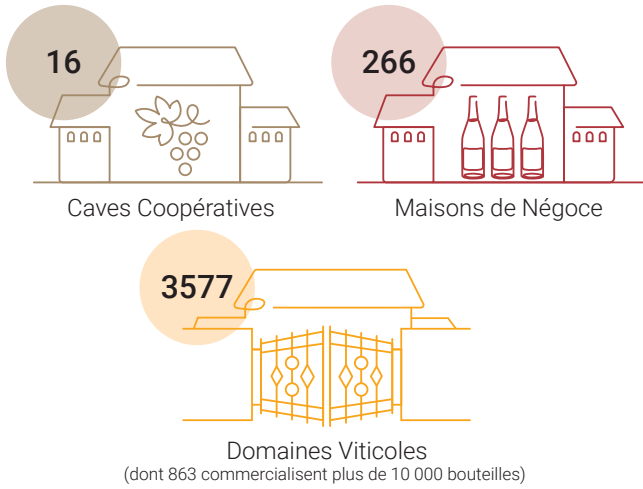


Production par groupes d'appellations

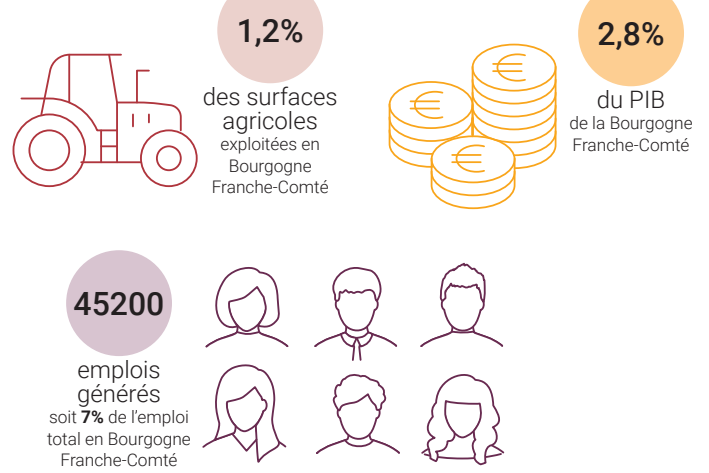


LES CHIFFRES CLÉS DE LA BOURGOGNE VITICOLE

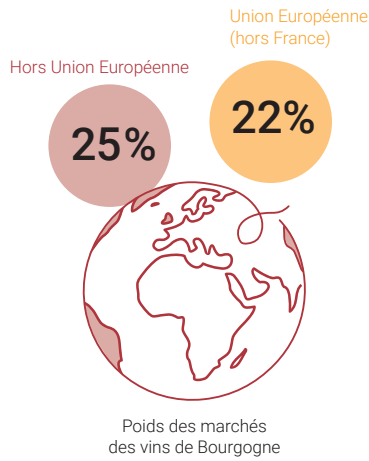
Les Entreprises



Le Poids régional



Parts de l'export

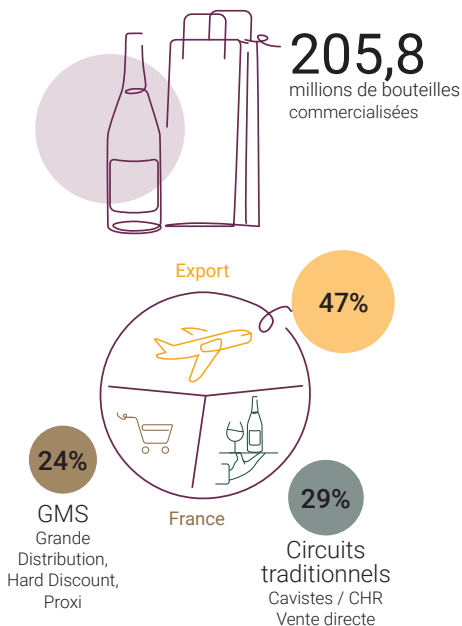


Premiers marchés à l'export

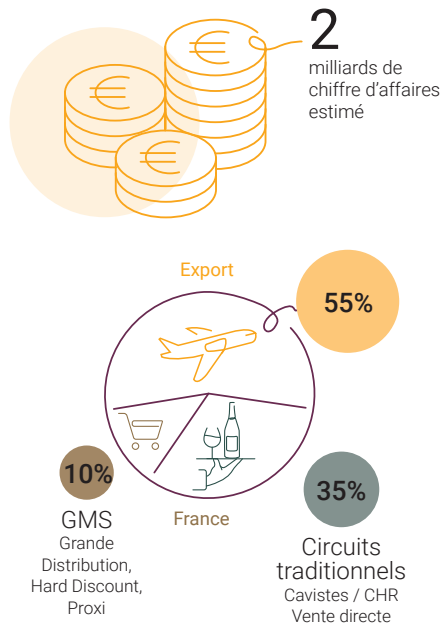


Le Marché

Millions de bouteilles et répartition des ventes



Chiffre d'affaires et répartition du chiffre d'affaires



Chiffre d'affaires à l'export et échanges mondiaux

